



OUR DNA



 FULLY  
EQUIPPED

---

## CONTENTS

---

WHY CROWN CANOPY	2
THE FACTS	2
VEHICLE RANGE	3
COMPOSITE SHELL	5
TRULY WHITE	6
WINDOWS	7
THE STANDARD	8
THE LOOK	9
QUALITY LEGACY	10

---

## WHY CROWN CANOPY

---

Crown canopies are a robust and versatile accessory designed to enhance the functionality and durability of your vehicle.

Available to fit double, or extra cab variants. With Crown you can choose from a range of window options to suit your specific needs and preferences.

Each unit is meticulously hand-built from a single, high-strength fibreglass shell, ensuring optimal impact resistance and durability.

Whether you're navigating rugged terrains or simply need a secure space for your gear, the Crown canopy transforms your vehicle into a reliable partner for both work and adventure.

## THE FACTS

---

More than just a storage solution, Crown canopies provide a protected, weather-resistant space for your tools, gear, and supplies, keeping everything secure and organised. Its seamless design integrates beautifully with your vehicle, adding not only functionality but also a polished, professional look.

Ideal for tradespeople, outdoor enthusiasts, and anyone needing extra utility from their vehicle, the Crown canopy stands as a durable and dependable extension of your truck, built to handle the demands of your lifestyle.



FORD



GWM



ISUZU



JAC



KGM



LDV



MAZDA



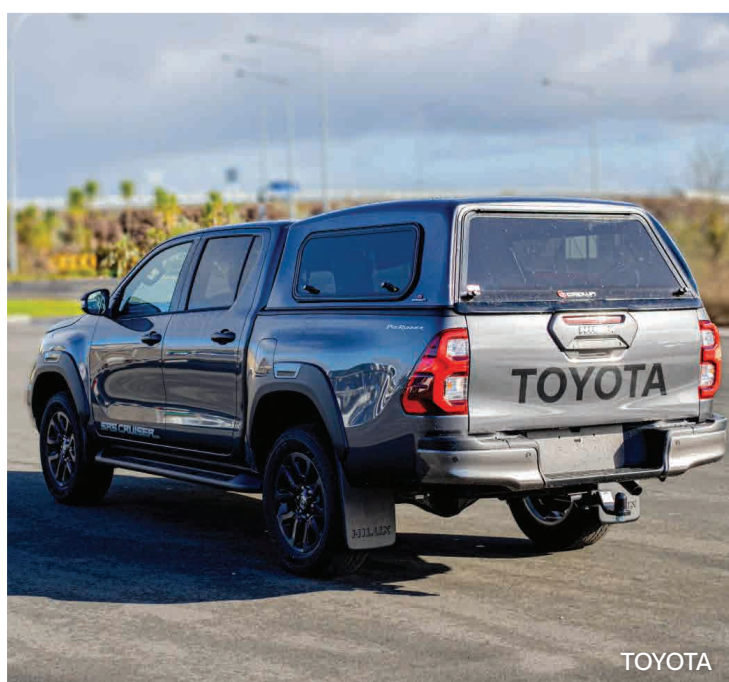
MITSUBISHI



NISSAN



RAM



TOYOTA

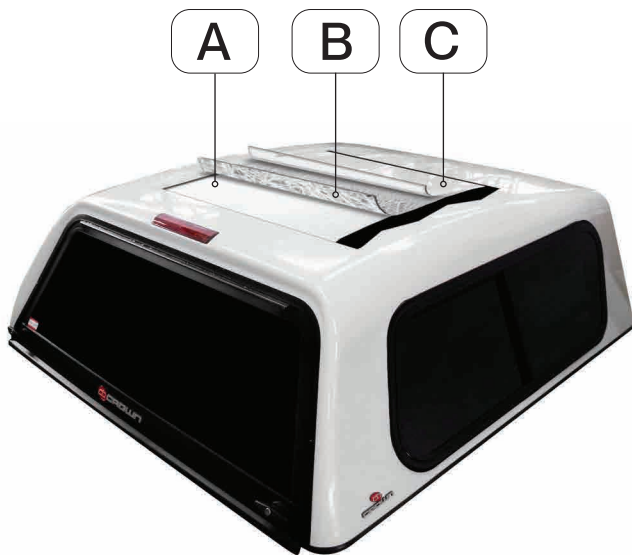


VOLKSWAGEN



## STRENGTH IS OUR FOUNDATION

Like your home every Crown canopy is built on a strong foundation. Central to every canopy is the unique fully integrated base rail assembly. This provides a watertight, extremely strong mounting architecture for enduring performance, these have been fundamental to the design for over 30 years.



## THE CROWN DNA

Equally important are the composite materials and processes we use to build each Crown canopy. This guarantees performance and longevity you can rely on.

Heavy duty 5mm fibreglass construction, comprising of:

- A. Reinforced polyester resin, 60% by weight of laminate
- B. 50mm long glass fibre near-isotropic, 40% by weight of laminate
- C. UV resistant high-gloss finish gel coat 0.5mm thickness



## SMOOTH EXTERIOR

A smooth, high-gloss, durable finish in gel coat white, coupled with optimum UV protection ensures a maintenance free exterior.



### WHEN WHITE ISN'T WHITE

Unique gel coat formulations precisely colour match the white of most manufacturers' vehicles as follows:

FORD	A2/AW/SWU	ARCTIC WHITE
FORD	A5Y/7VTAWWA	FROZEN WHITE
GREAT WALL	98	IVORY/PURE WHITE
ISUZU	527	SPLASH WHITE
LDV	M001:18	BLANC WHITE
MAZDA	A7Y	ICE WHITE
MAZDA	527	SPLASH WHITE
MITSUBISHI	W32 W19	FAIRY WHITE
NISSAN	QM1	STORM WHITE
KGM (SSANGYONG)	WAA	GRAND WHITE
TOYOTA	O40	GLACIER WHITE
VOLKSWAGEN	2E2E	FROZEN / CLEAR WHITE



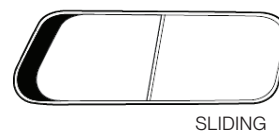
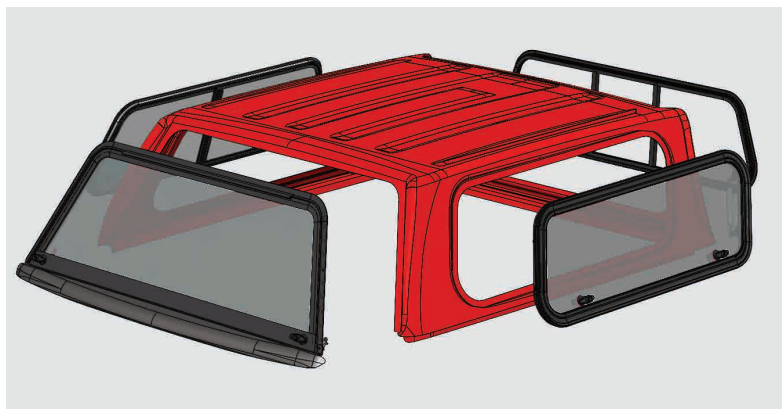


## QUALITY WINDOWS

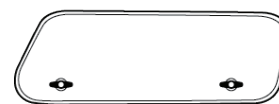
High quality window and door components compliment the design, function and style of each canopy. Tempered safety glass is used for all windows and doors

## OPTIONS TO SUIT

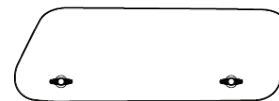
Options include lift-up windows for easy access, sleek flush windows for style, the sliding window with ventilation for pets, or a combination of both for ultimate versatility.



SLIDING



LIFT-UP



FLUSH

## SECURITY



Rear doors incorporate double pozi catch-latch & locking handles for added security

## REMOTE LOCKING UPGRADE

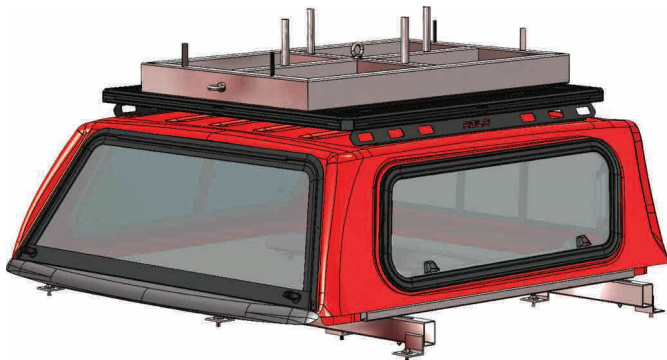


Integrated into the vehicle's electrical system, our remote door locks and unlocks with the factory vehicle remote, simple click & lock security. Using slam latch technology, the rear door can be closed with no manual latching required.

## WEATHER-TIGHT

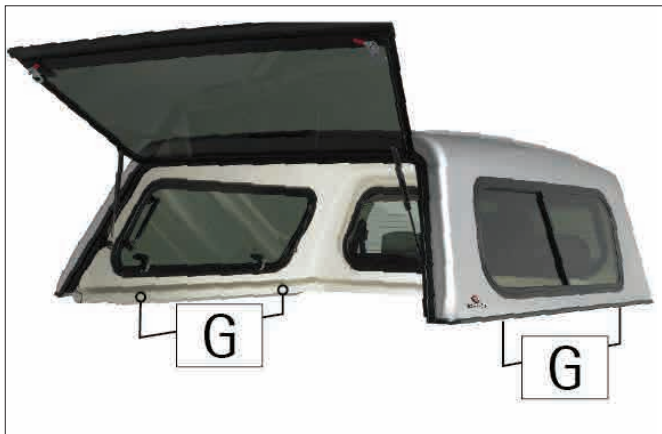


Windows are installed using a customised rubber seal with an encapsulated foam core to form an impenetrable water barrier.



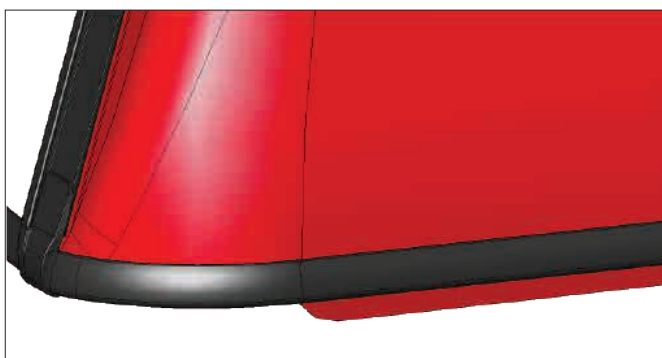
### WE'VE SET THE STANDARD (AS 1235; 2000)

In accordance with the loading requirements of the Australian standard, all our dual cab Crown canopies have successfully achieved a rated load capacity of 100kg. This is testimony to the strength and rigidity of the design & construction of the Crown canopy.



### EASY FITMENT – WATERTIGHT

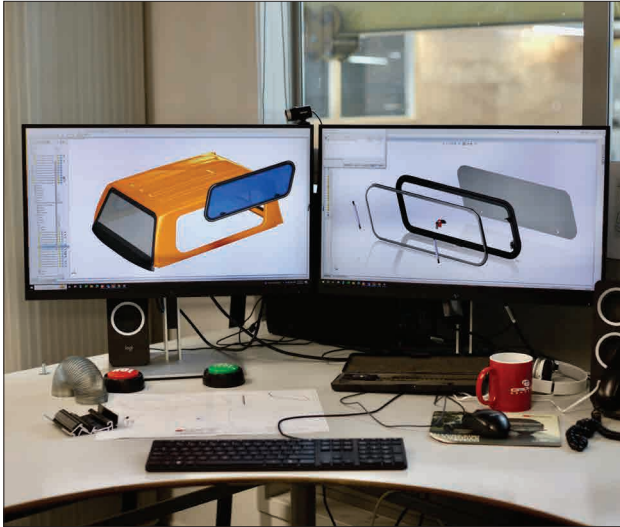
Pre-drilled mounting rails for precise vehicle fitment (G). A rubber membrane secures the canopy to the vehicle ensuring a watertight seal.



### NO LEAK EXTERIOR TRIM

The exterior trim is fitted using a high bond adhesive to ensure a no leak design.

*“Performance is so important to us, we won’t leave anything to chance.”*



### THE LOOK

Just like in fashion, accessories should complement the overall appearance of your vehicle. The Crown design team is committed to ensuring that all Crown canopy designs seamlessly match the vehicle's lines and style for every application.

The one-piece moulded shell ensures a seamless fit, complementing the lines and curvature of the vehicle. The modern styling, unique to each vehicle, is achieved using CAD/CAM design software and laser scanning technology.



### MANUFACTURING PRECISION

Robotic machinery is incorporated into the manufacturing process for trimming the windows, door, and base rail. This ensures accuracy, quality, and manufacturing efficiency.



At Fully Equipped, we've been proudly making Crown canopies and vehicle accessories for over 30 years. We have progressed to be highly competitive in today's technically challenging world, yet we still build our products with the same passion and care that started our journey all those years ago.

See your nearest branch or visit [www.fullyequipped.co.nz](http://www.fullyequipped.co.nz) to view the complete range of Fully Equipped products.



**FULLY  
EQUIPPED**

0800 111 000  
[www.fullyequipped.co.nz](http://www.fullyequipped.co.nz)

Hamilton | Auckland | Wellington | Christchurch | Dunedin



MAR2025V1